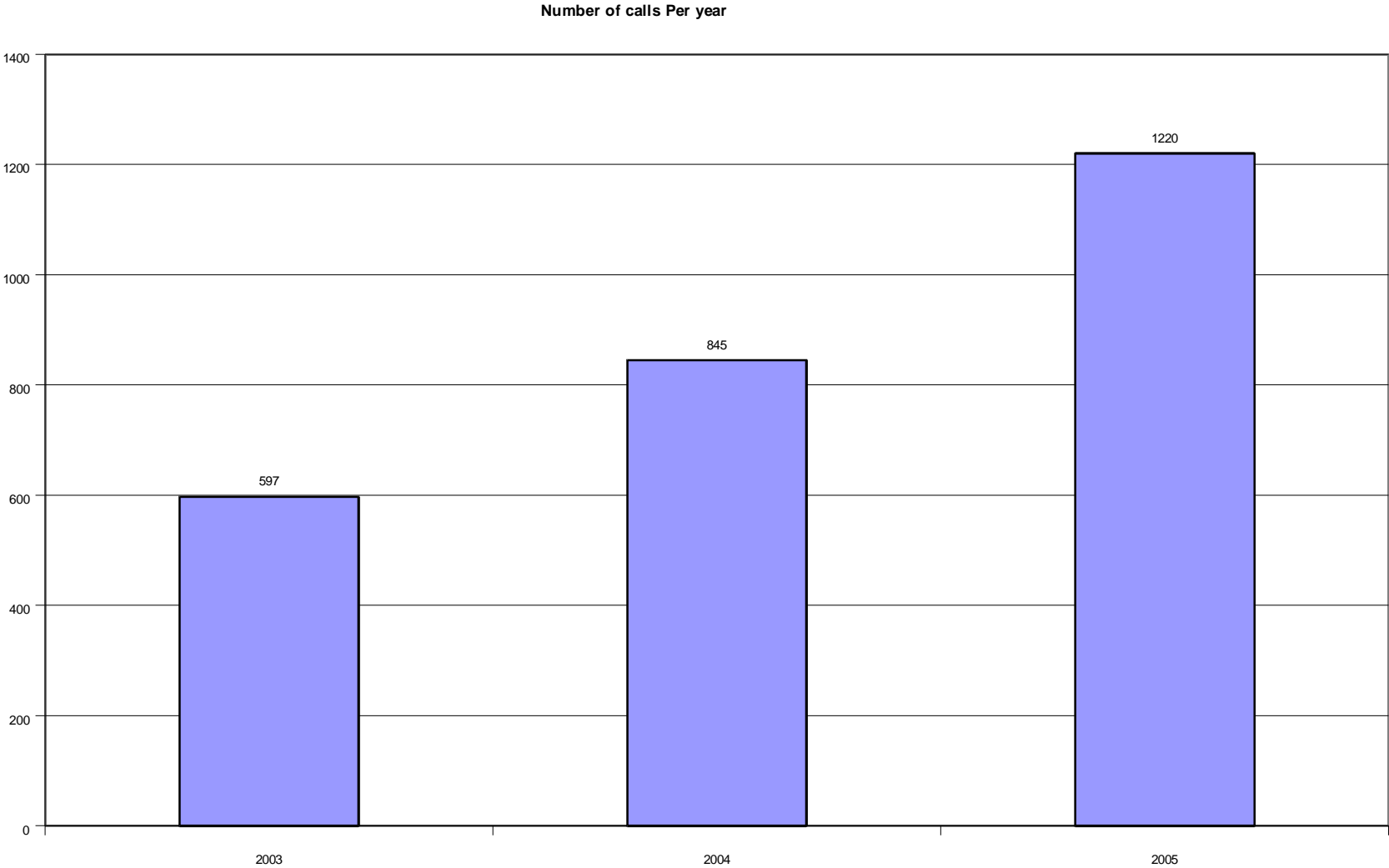




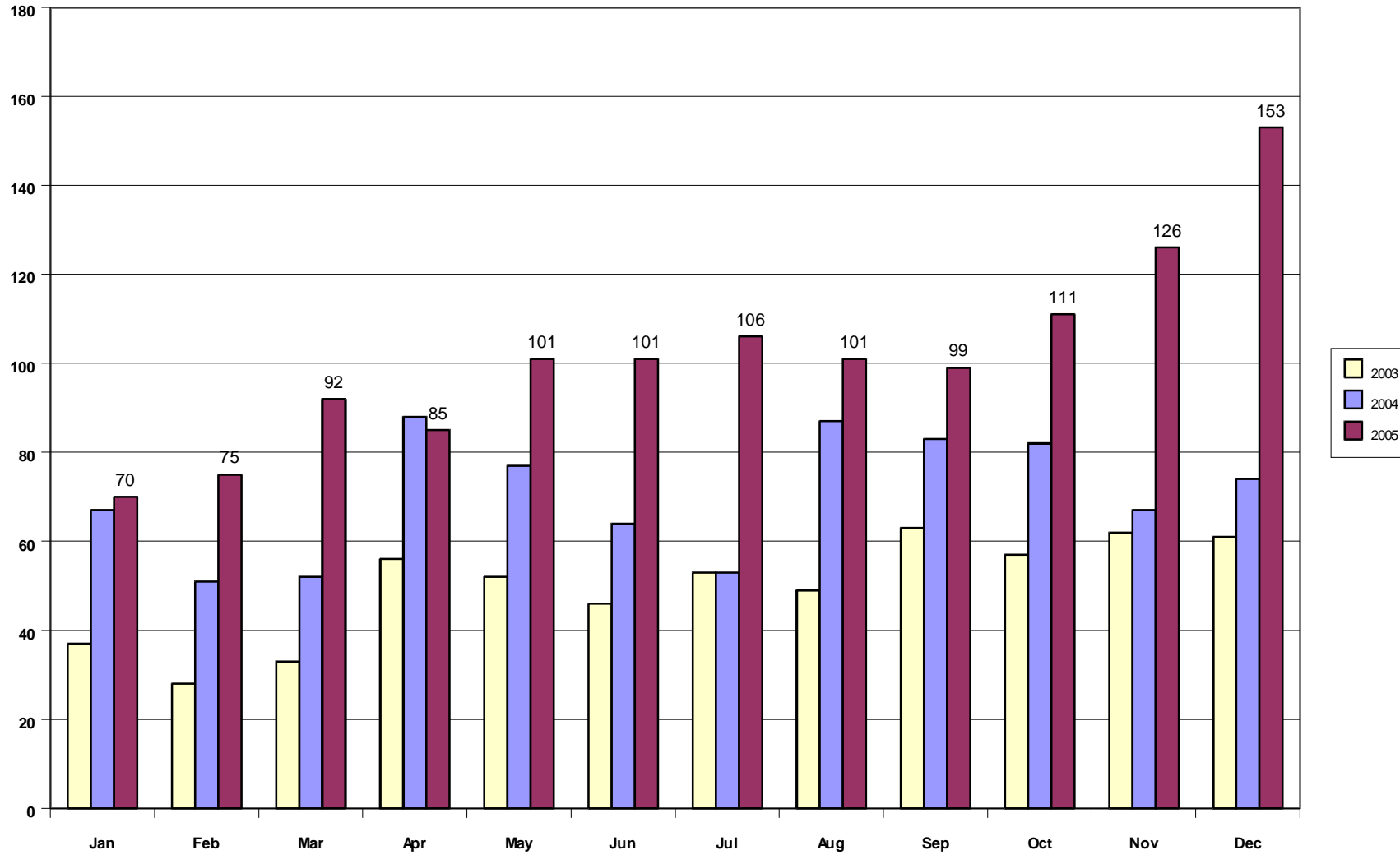
2005 Year on Year Comparison of Call Data

Prepared By John Woodgate
 Secretary
 Freewheelers EVS

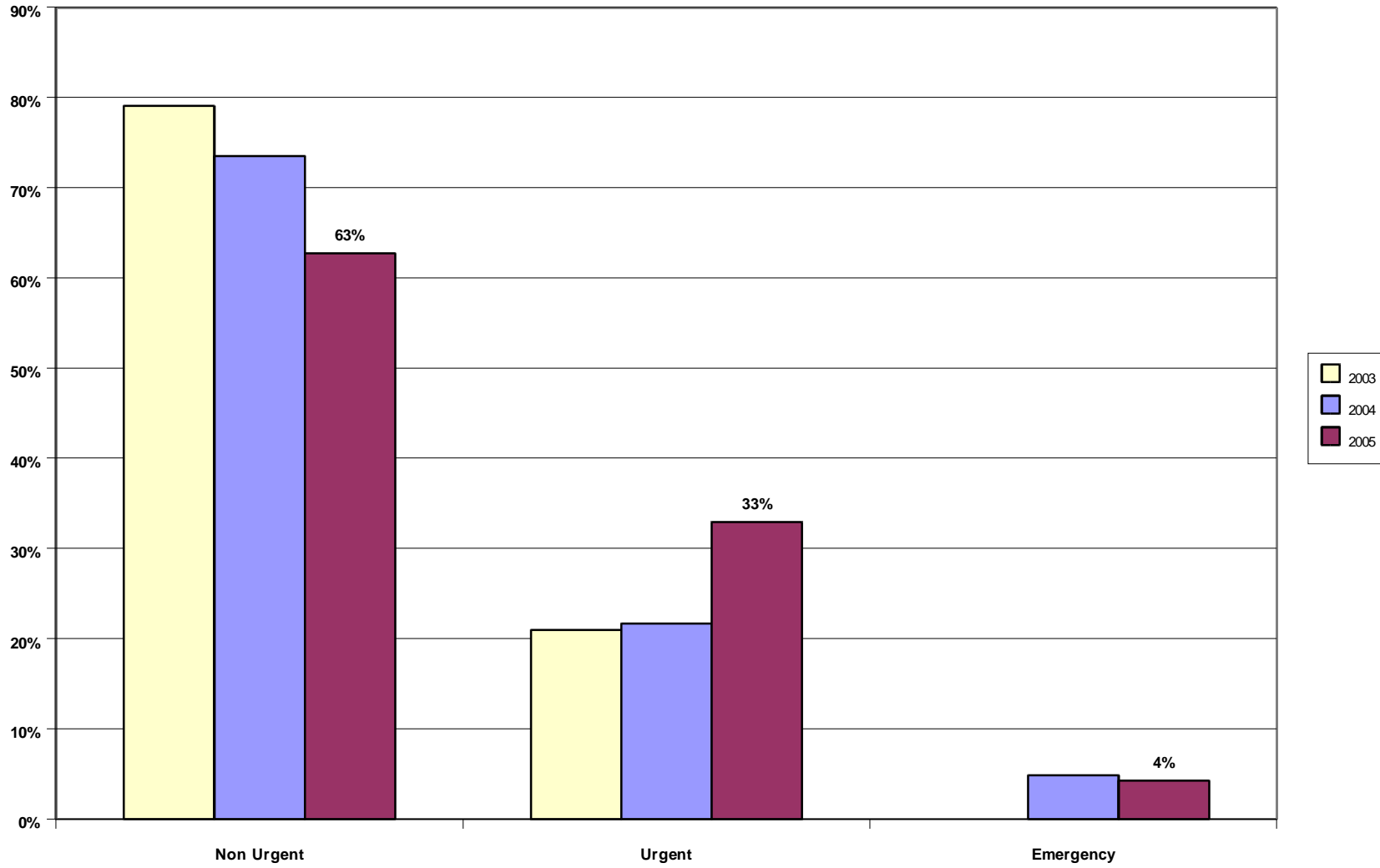
15th Jan 2006



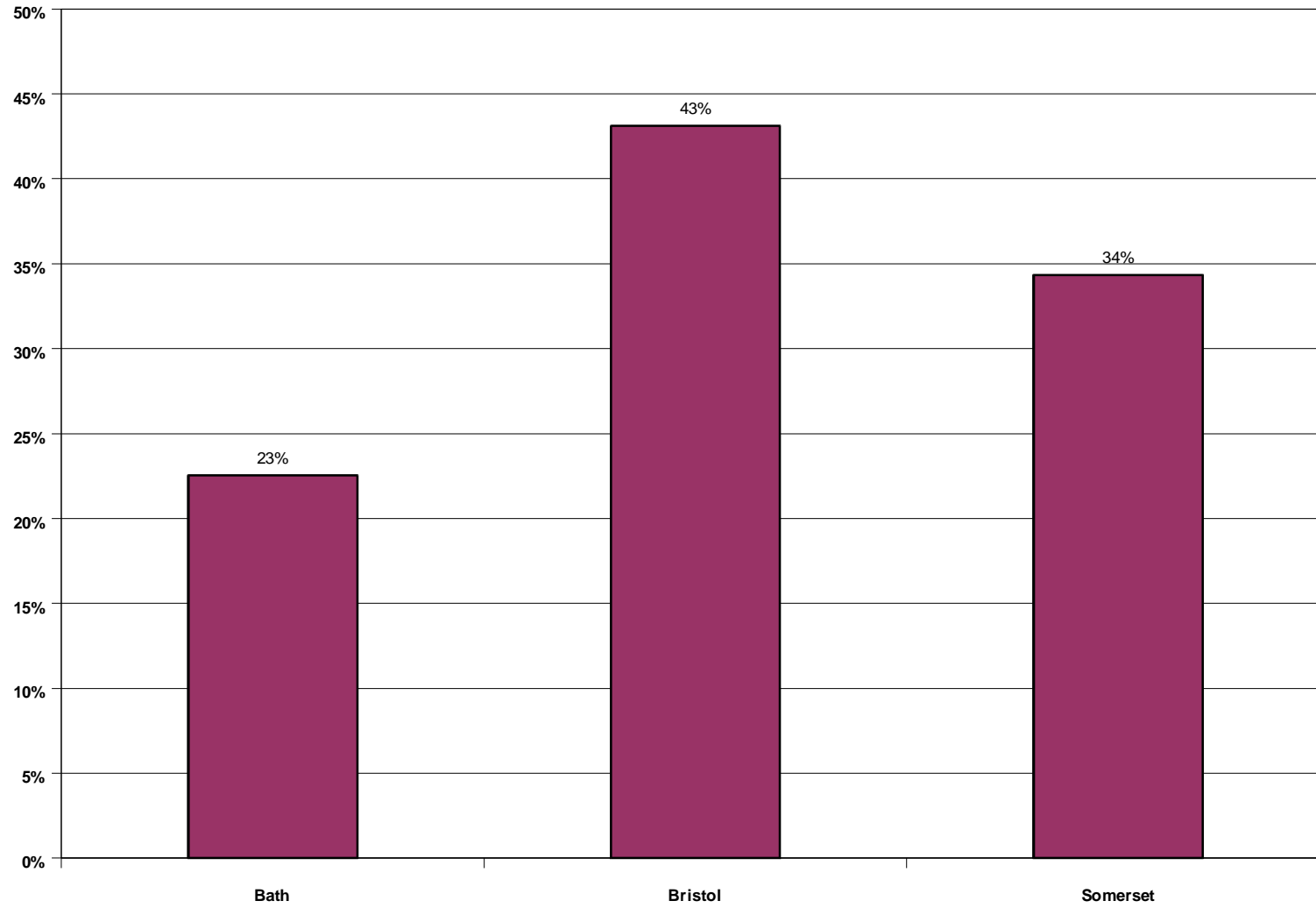
No of Calls Received



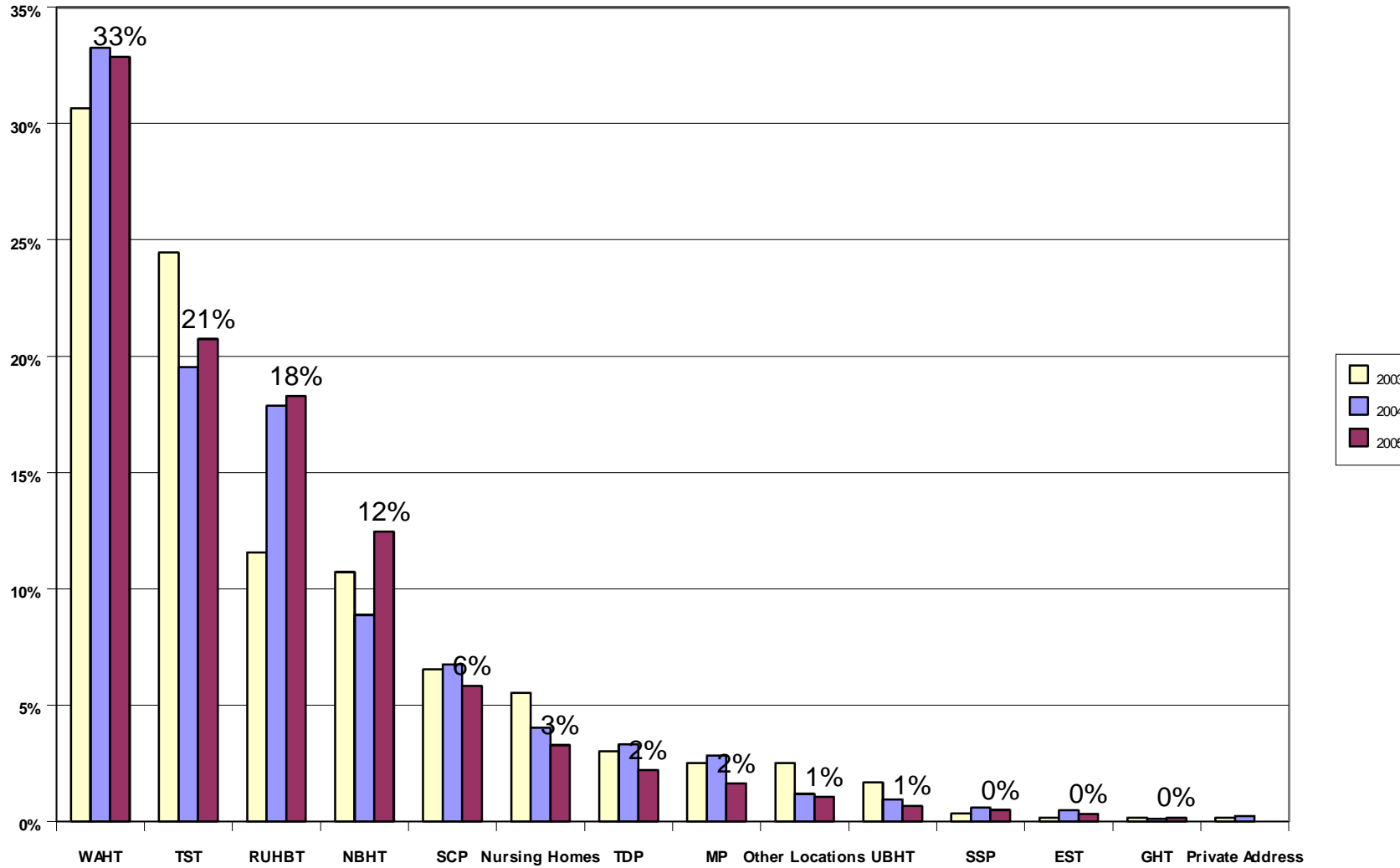
Classification of Calls



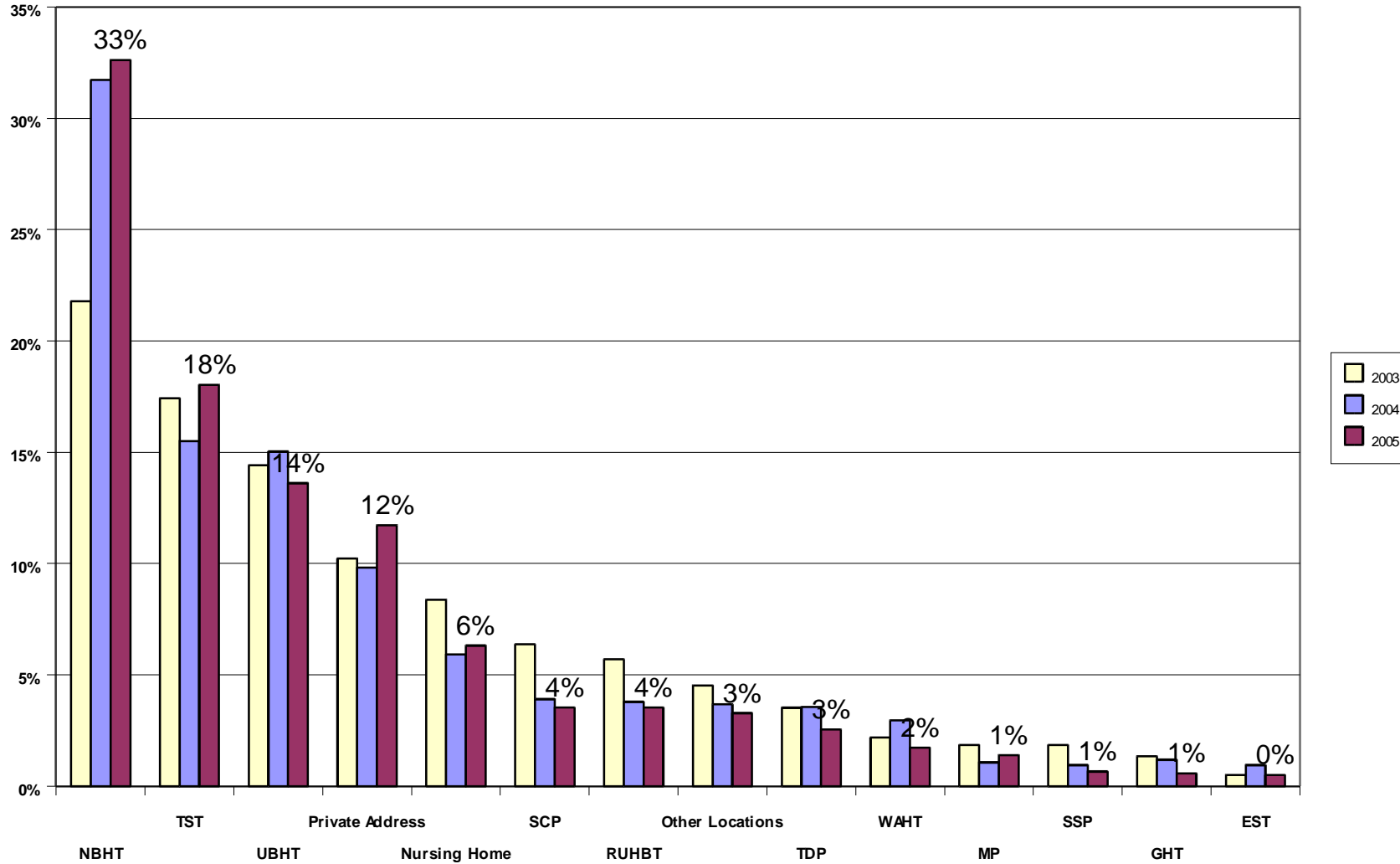
No of Calls Per Bike



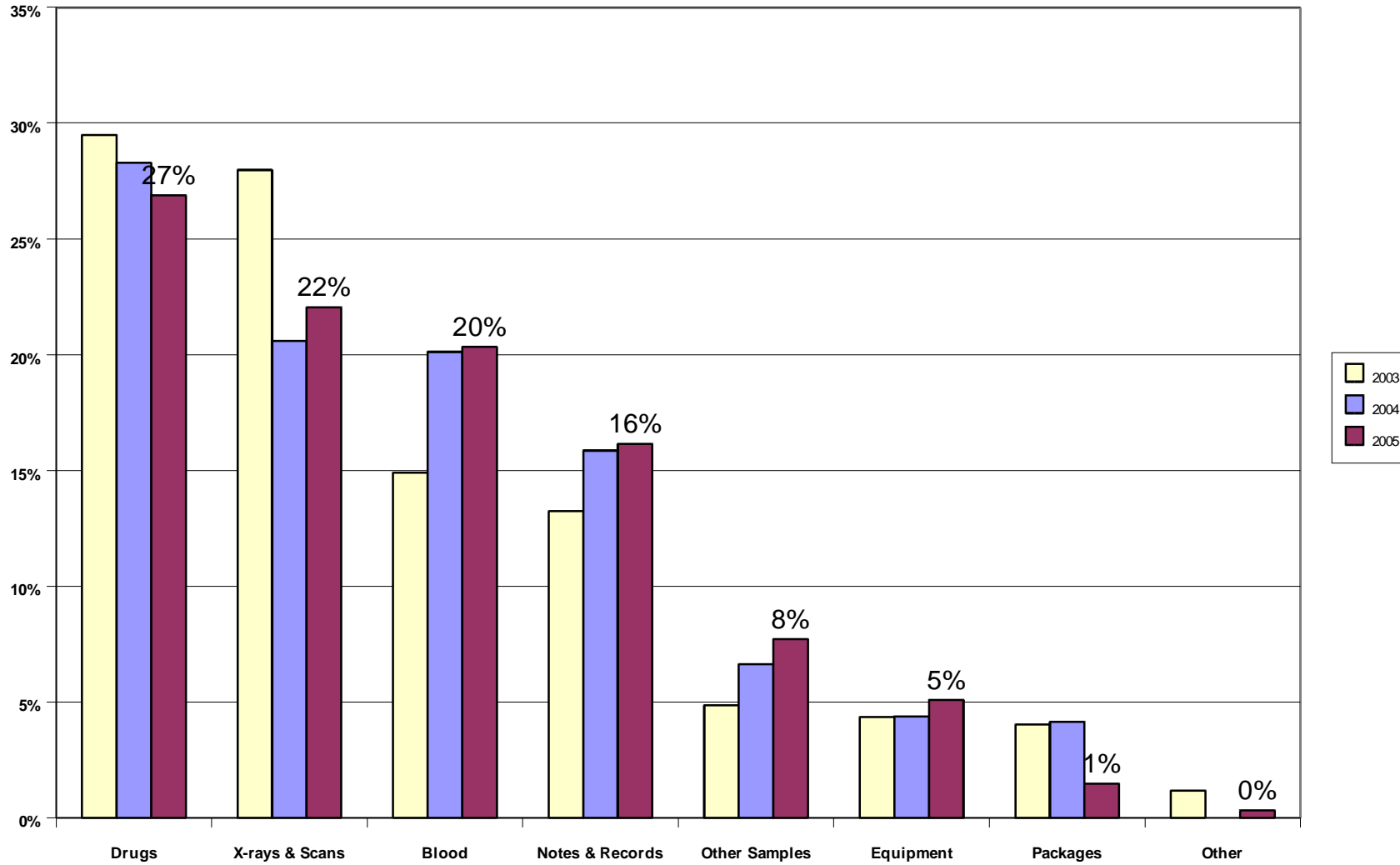
Locations Collected From



Locations Delivered To



Items Carried



Key	Name	Hospitals
EST	East Somerset NHS Trust	Yeovil District Hospital
GHT	Gloucestershire Hospitals NHS Foundation Trust	Cheltenham General Hospital, Delancey Hospital, Gloucestershire Royal Hospital, Standish Hospital
MP	Mendip Primary Care Trust	Butleigh Hospital, Queen Victoria Hospital Frome, Shepton Mallet Community Hospital, Wells & District Hospital, West Mendip Hospital
NBHT	North Bristol NHS Trust	Avon Orthopaedic Centre, Blackberry Hill Hospital, Burden Neurological Centre, Cossham Hospital Frenchay Hospital, Ham Green Hospital, Southmead Hospital, Thornbury Hospital, Westbury-on-Trym Hospital
RUHBT	Royal United Hospital Bath NHS Trust	Chippenham Hospital, Devizes Hospital, Malmesbury Hospital, Melksham Hospital, Paulton Memorial Hospital, Roundway Hospital, Royal United Hospital Bath, Trowbridge Hospital, Warminster Hospital, Westbury Hospital
SCP	Somerset Coast Primary Care Trust	Bridgwater Community Hospital, Burnham-on-Sea Memorial Hospital, Minehead Hospital, Williton Hospital
SSP	South Somerset Primary Care Trust	Chard Hospital, Crewkerne Hospital, South Petherton Hospital, Verrington Hospital
TDP	Taunton Deane Primary Care Trust	Dene Barton Hospital, Wellington Cottage Hospital, Wiveliscombe Hospital
TST	Taunton & Somerset NHS Trust	Musgrove Park Hospital, Taunton
UBHT	United Bristol Healthcare NHS Trust	Bristol Eye Hospital, Bristol General Hospital, Bristol Haematology & Oncology Centre, Bristol Homoeopathic Hospital, Bristol Royal Hospital for Children, Bristol Royal Infirmary, Keynsham Hospital, St Michaels Hospital Bristol, University of Bristol Dental Hospital
WHAT	Weston Area Health Trust	Weston General Hospital